

100

SHORELINE HIGHWAY

MILL VALLEY | CA

SHORELINE OFFICE CENTER

WORLD CLASS WATERFRONT WORK ENVIRONMENT

FOR LEASE



NEWMARK



BASIN STREET
PROPERTIES EST. 1974

HADEN ONGARO

415-314-8713

haden.ongaro@nrmk.com

CA RE LIC #00916960

ALISA BELEW

415-465-2071

alisa.belew@nrmk.com

CA RE LIC #01821371

FOR LEASE ±744 RSF TO ±5,352 RSF
\$4.95 TO \$5.45/RSF, FULL SERVICE

Visit us at thriveatshoreline.com

100	±5,352 RSF
150	±1,993 RSF
155	±744 RSF
212	±1,985 RSF
300	±2,780 RSF

[VIRTUAL TOUR](#)

[VIRTUAL TOUR](#)

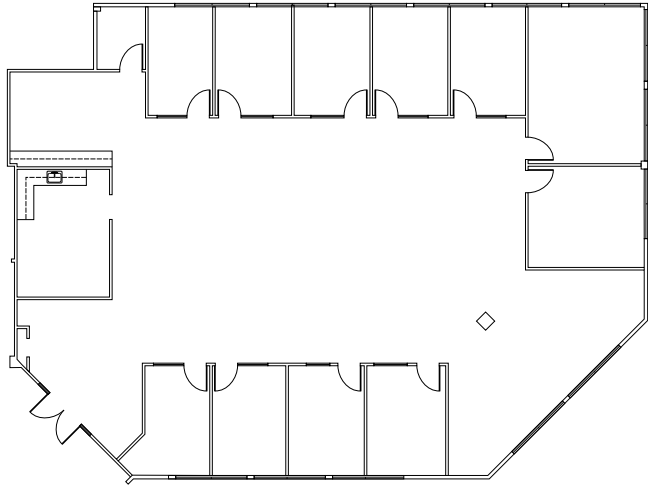


- Waterfront location with stunning views of Richardson Bay and Mount Tamalpais
- Adjacent to world-class bike route from San Francisco through Marin County
- Modern office building with high-end improvements
- Parking ratio of 4/1,000 RSF



Come join Club Evexia, a ±21,622 SF state-of-the-art fitness and wellness center offering TRX, Pilates, yoga, cycle classes, one-on-one training and group training services! All Shoreline Office Center tenants receive a special gym membership rate!

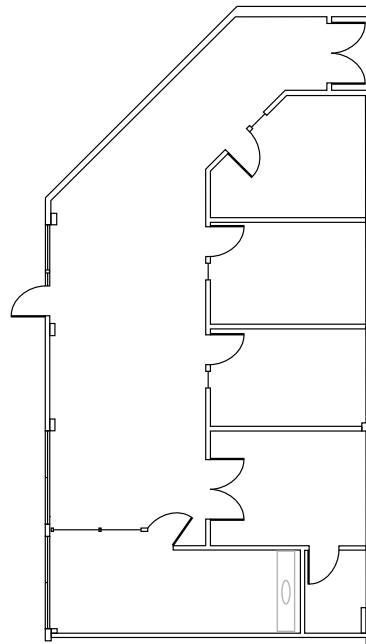
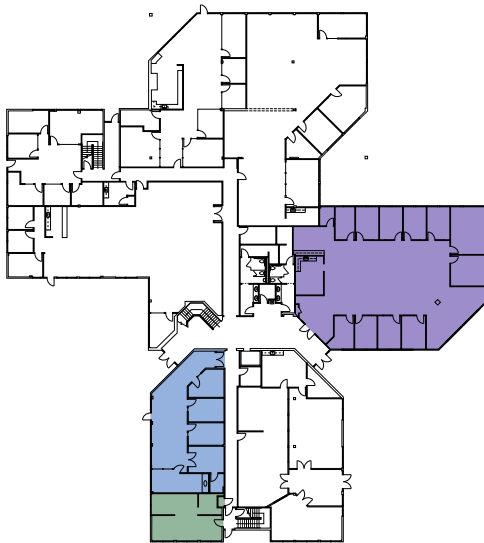




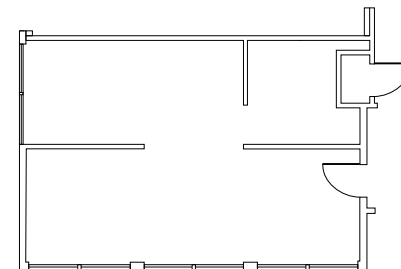
Suite B-100
±5,352 RSF



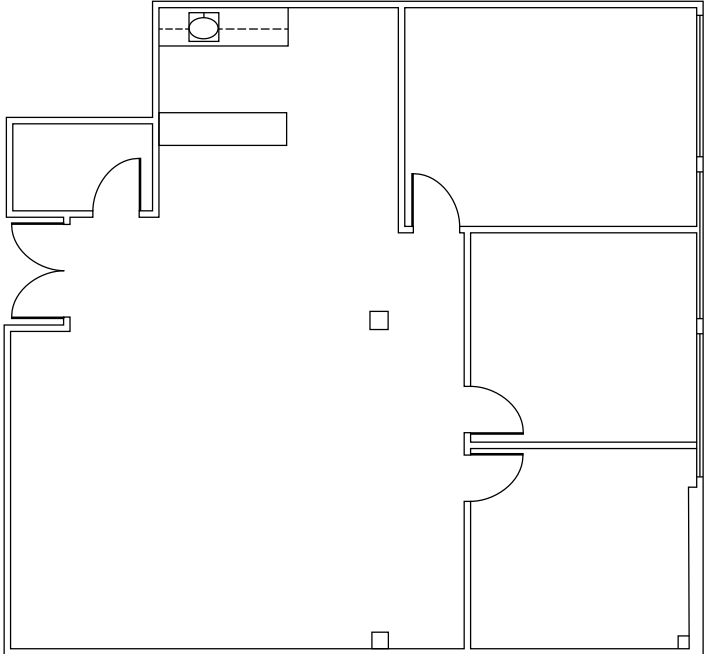
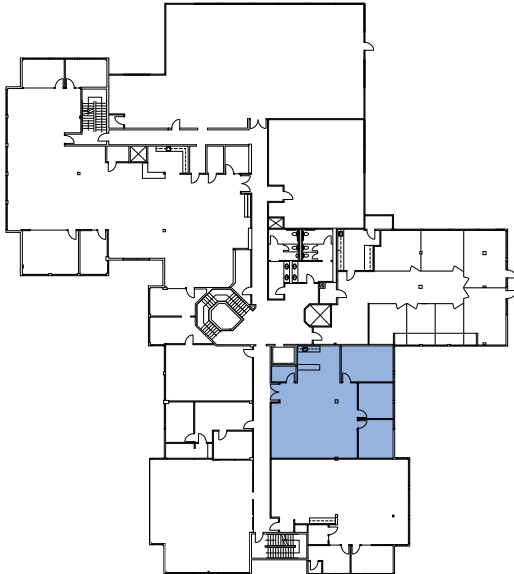
Suite B-100 Office Rendering



Suite B-150
±1,993 RSF

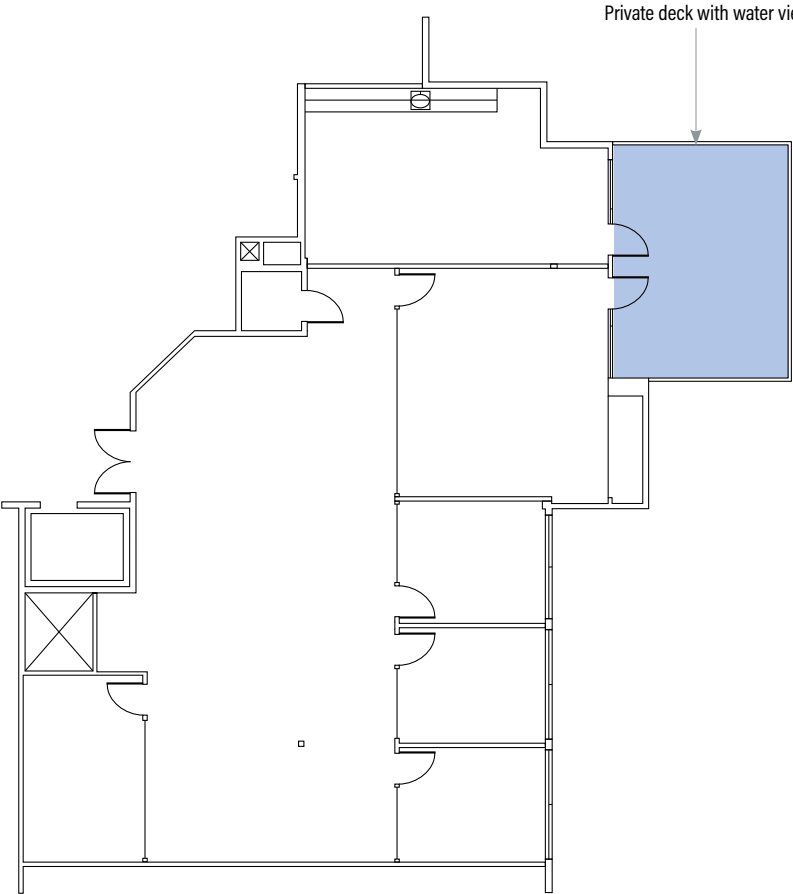
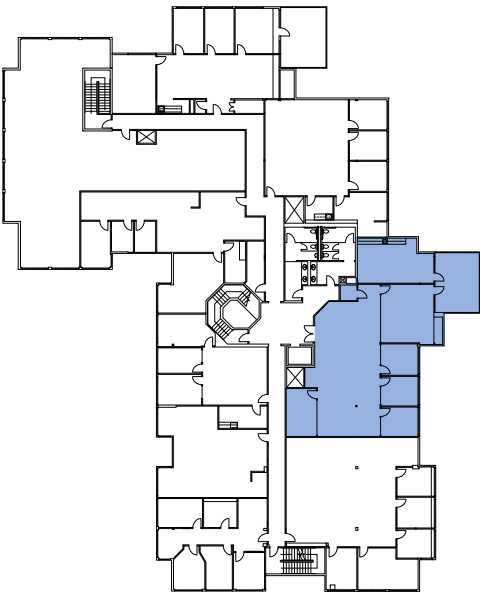


Suite B-155
±744 RSF



Suite B-212
±1,985 RSF

[VIRTUAL TOUR](#)



Suite B-300
±2,780 RSF

[VIRTUAL TOUR](#)

100

SHORELINE HIGHWAY

MILL VALLEY | CA

SHORELINE OFFICE CENTER

WORLD CLASS WATERFRONT WORK ENVIRONMENT

FOR LEASE



1101 Fifth Avenue, Suite 370, San Rafael, CA 94901 415-526-7676 nmrk.com

The distributor of this communication is performing acts for which a real estate license is required. The information contained herein has been obtained from sources deemed reliable but has not been verified and no guarantee, warranty or representation, either express or implied, is made with respect to such information. Terms of sale or lease and availability are subject to change or withdrawal without notice. Last edited: May 12, 2026 5:19 PM

NEWMARK

 **BASIN STREET**
PROPERTIES EST. 1974

HADEN ONGARO

415-314-8713
haden.ongaro@nmrk.com
CA RE LIC #00916960

ALISA BELEW

415-465-2071
alisa.belew@nmrk.com
CA RE LIC #01821371